

Dr.Anitha Moodley;AnitaTumeh [RN];Feliscia Relinschi;FiCare Committee SMH NICU

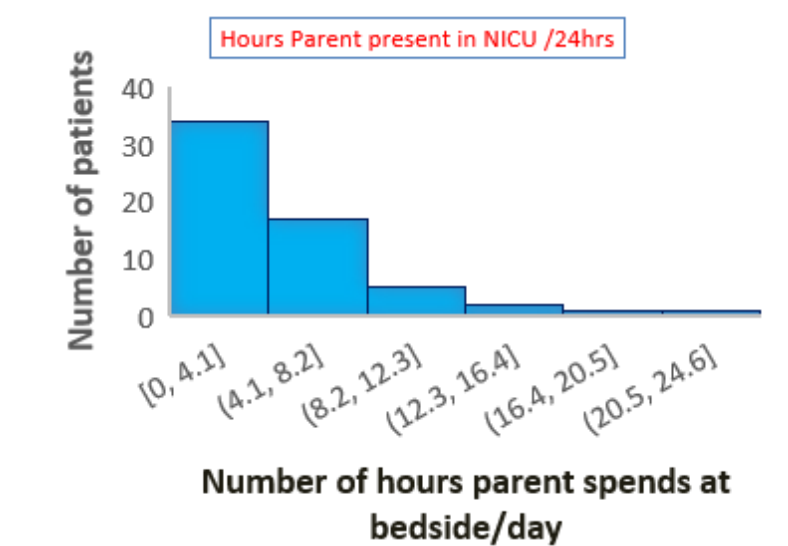
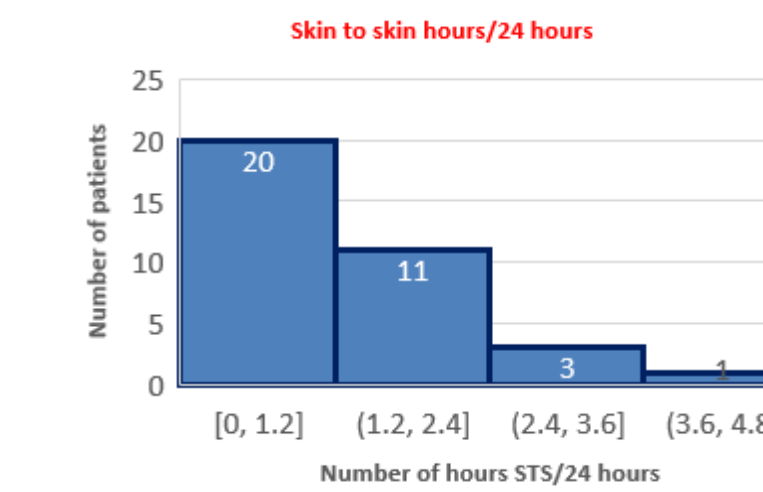
AIM

To improve parent presence at Surrey Memorial hospital by 30% by June 2025

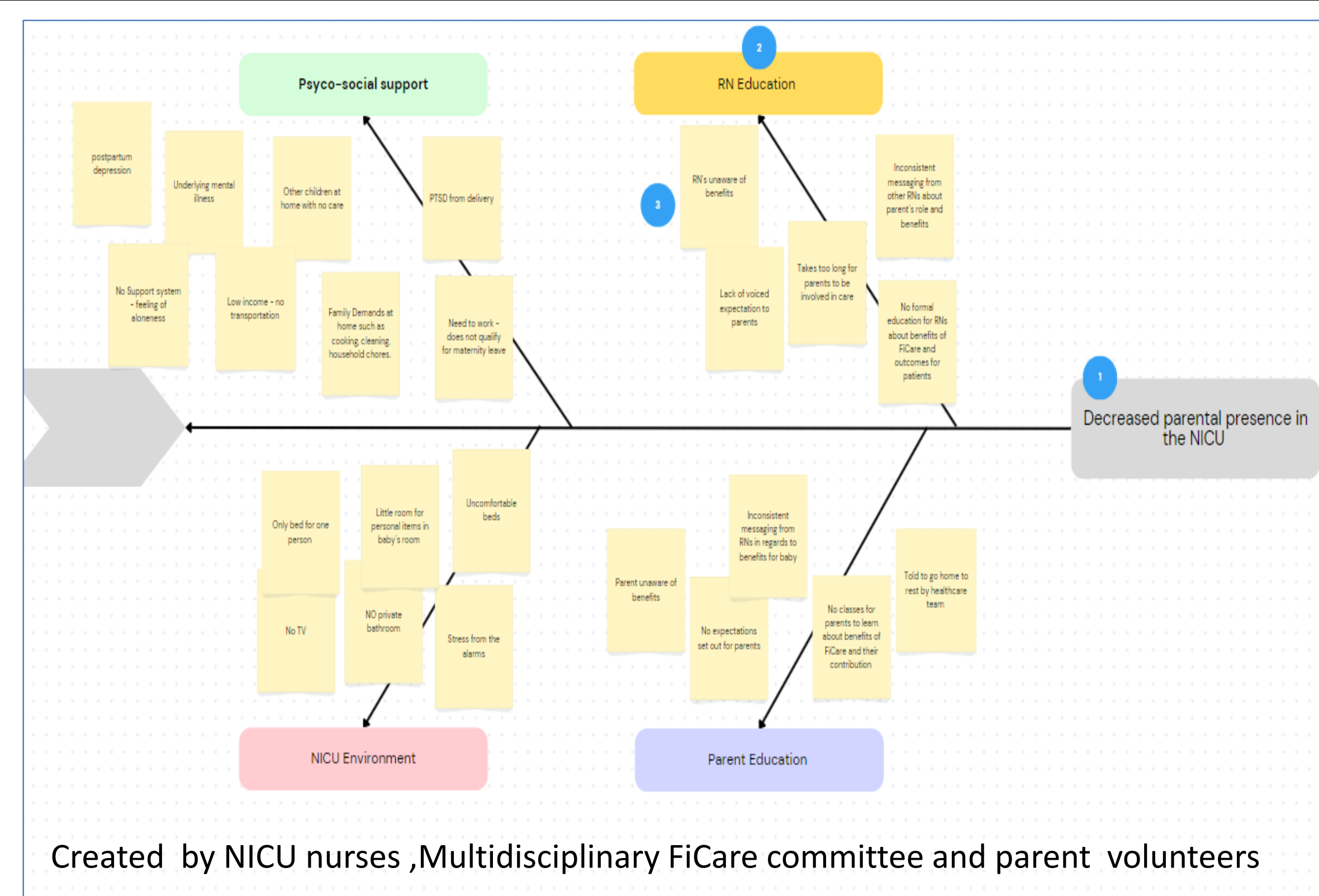
Importance

Background: The long- and short-term benefits of caregivers being present in the NICU to engage in developmental care and developmental play with their babies is well established. Positive outcomes include improved parent emotional health, better oral feeding, better growth and better sensory and regulatory states in childhood.

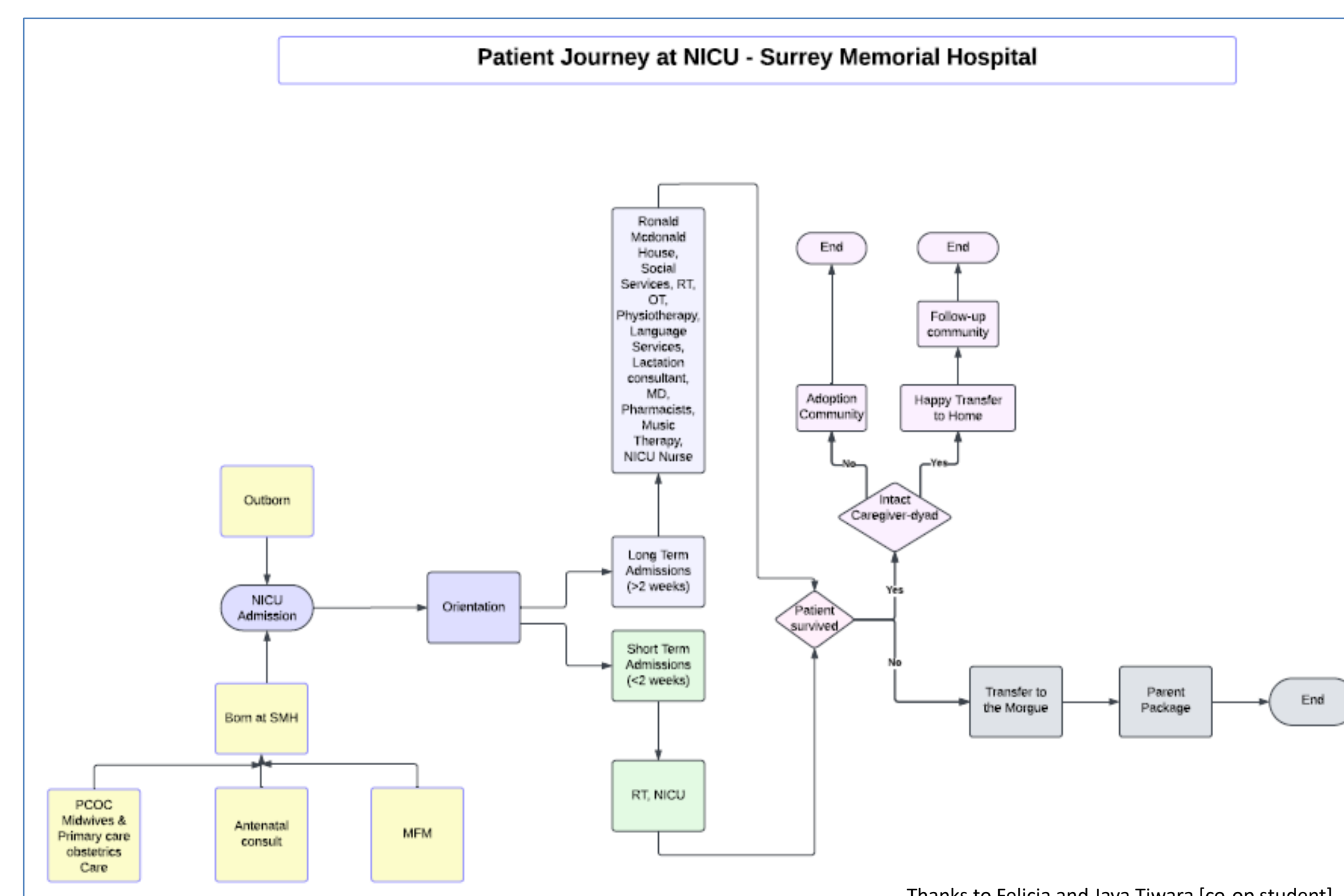
In our NICU, the average time caregivers spend at bedside is 2 hours/day. Skin-to-skin time [as a marker of engaging in activity with baby] has a median of 0 hours/day



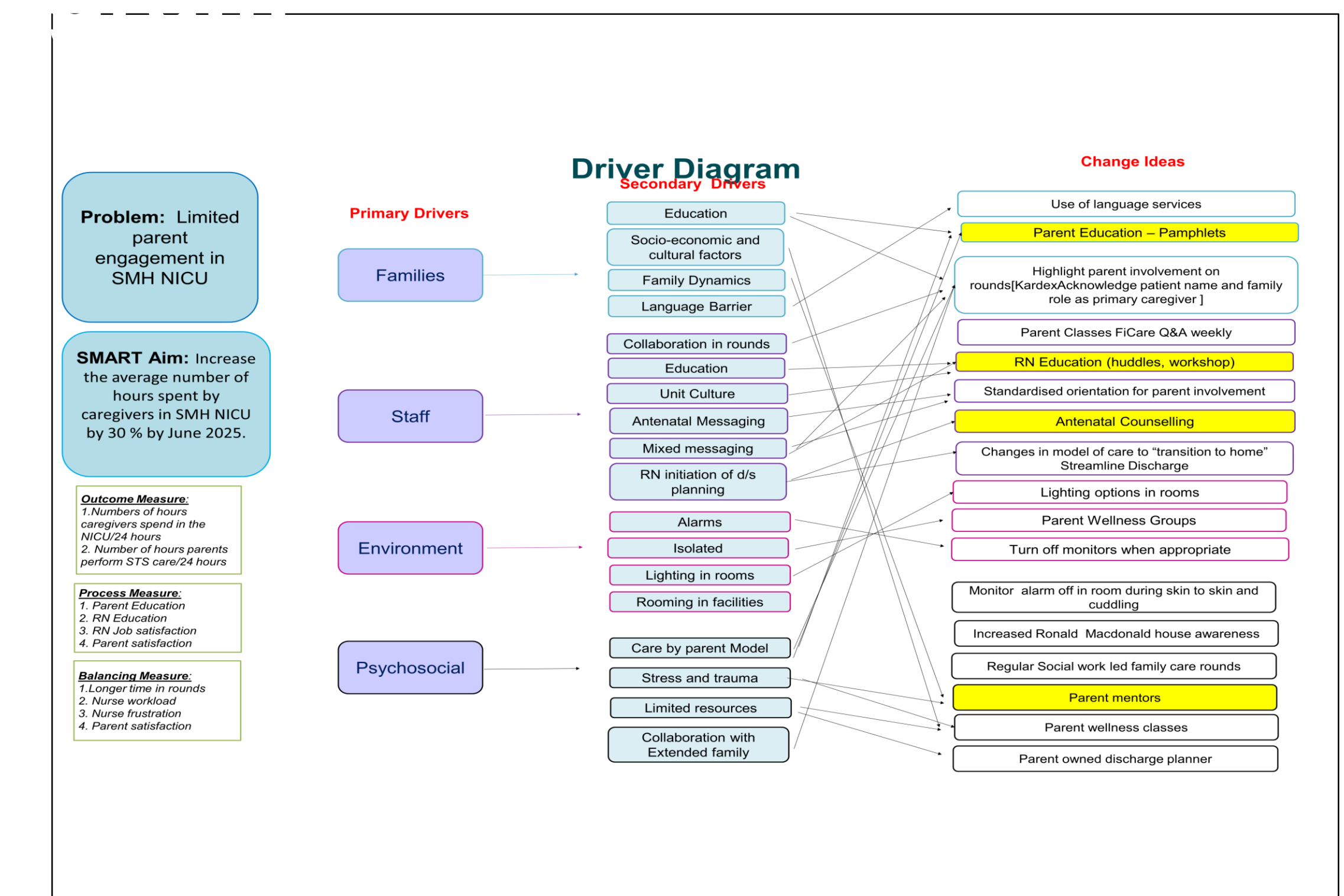
FISHBONE CHART



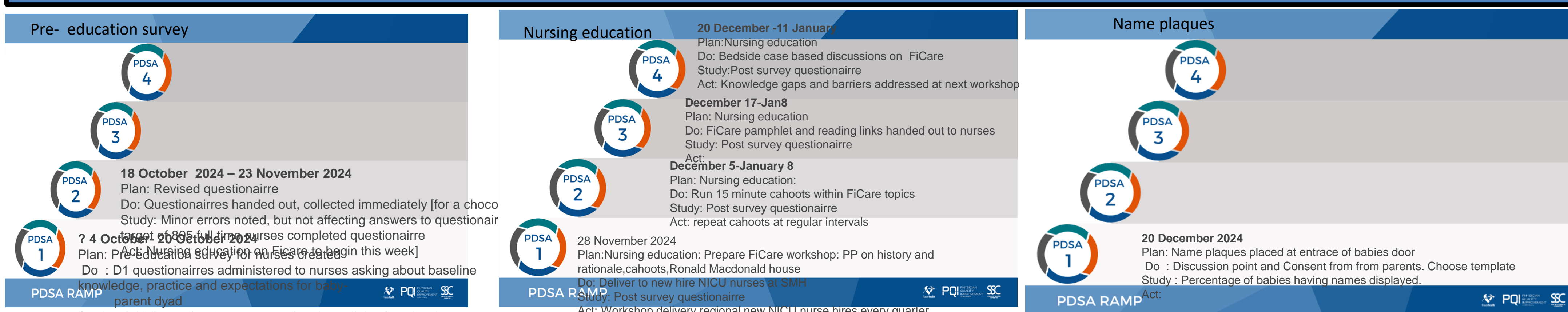
PROCESS MAP



DRIVER DIAGRAM



PDSA Cycle / Change plan



Lessons Learned / Next Stage/ Plan

- ✓ It takes a village to change culture . We enlisted any discipline that made contact with families. Allied health were our greatest support.
- ✓ Get buy in from nurse administrator, this helped us launch the project.
- ✓ Start with people who had no preconceived ideas –residents, new hire RN, then work your way up.
- ✓ PDSA mantra: When at first you fail, try and try again.

Data Collection

- Pre survey and post survey Nursing knowledge and practice of Ficare. **Displayed as histograms and Pareto charts**
- Pre and post intervention data –Caregiver hours in NICU, STS hours, Bounce back to hospital within 2 weeks of discharge, BW and gestational age comparison: **Xbar and S charts for analysis of average hour/day**
- Parent satisfaction and knowledge pre and post intervention **Displayed as histograms and Pareto charts**